



Worksheet HS01 & Training Record Operating hydraulic equipment safely

Operating Hydraulics

Email:

Course:

Provider:

Expected Outcomes: (45-90mins)

1. Know how to recognise the risk factors due to equipment type, age, and development.
2. Appreciate what things you need to check before operating hydraulic equipment.
3. Appreciate what training, checking and documentation are required before equipment should be started.
4. Appreciate what might be required for typical start-up and shut-down procedures.

Previous Knowledge Required:

No previous knowledge is required although it is recommended you complete all of the HI01-5 'Introductions to hydraulics' worksheets.

Terminology:

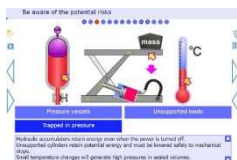
Risk assessment, hazards, procedure documents, inspection, validation dates, calibration, start-up.

Record of Achievement:



Click the email icon to post your results, once training is complete. Enter an LRS username and endpoint details or see www.e4training.com/xapi/ for free examples. Keep a record of any written work or worked calculations etc.

Interactive tutorials



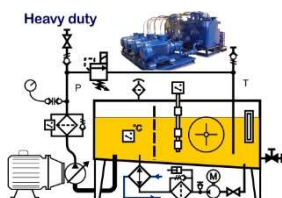
Complete the 'How to operate hydraulic equipment' tutorial at www.e4training.com/hydraulic_courses/microtutor1.php?wtoperate

Complete the quick quiz at the end and post results via LRS/LMS.

Date, score & time:

Tick when posted

Coursework investigations



Read the detailed information and watch the instructional videos at www.e4training.com/hyd_newbie/operate1.php and operate2.php

- Learn what factors to be aware of.
- Learn how to recognise some of the risk factors.
- Learn what procedures and documentation need to have been completed.

Read content:

Complete



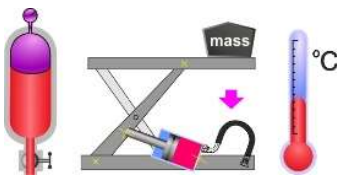
Study the detailed information and instructional videos at www.e4training.com/hyd_maint/operate1.php and [operate2.php](http://www.e4training.com/hyd_maint/operate2.php)

- Learn what needs to be checked before start-up.
- Learn about typical start-up and shut-down procedures.
- Learn what procedures and documentation need to be followed or completed.

Read content:

Complete

Practical & coursework exercises



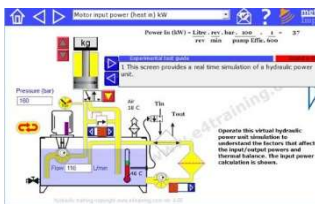
Identify a piece of hydraulic equipment you work with (or consider the scissor lift design example).

Follow the coursework exercises at www.e4training.com/hyd_newbie/operate3.php

Complete operating review:

Submit a report

Further work - Virtual test rig experiment



Operate the simple hydraulic power unit at www.e4training.com/hyd_powerunits/powerunit3.php

- Drive the cylinder up and down and change the load mass.
- Increase the cooling as required.

Date, score & time:

Tick when posted

Key questions / Plenary

Can you explain different risks between a production m/c, one-off design, and a m/c in development?
Can you describe 3 things you should check before starting any equipment?
Can you describe at least 2 documents that should be before starting any equipment?

Record answers:

Tick when complete

And Finally:

Complete this worksheet and keep for your certification records. Submit any written coursework etc. to your training course provider.

Follow-on Course Worksheets:

Potential follow-on worksheets include: HS02 – Safety awareness course

For more specialist course worksheets visit

www.e4training.com/hydraulic_courses/worksheets1.php or [courses1.php](http://www.e4training.com/courses1.php)