



Worksheet MT1 & Training Record

Hydraulic maintenance Considerations

Hydraulic Maintenance

Email:

Course:

Provider:

Expected Outcomes: (30-50mins)

Appreciate that hydraulic equipment is designed to meet different duties.

Understand which design features are employed to extend equipment service life.

Learn about some typical reliability issues with hydraulic equipment and how to monitor and maintain them.

Previous Knowledge Required:

No previous hydraulic knowledge is required.

Self-driven micro-learning tutor (SDLT)



Complete the 'Hydraulic maintenance considerations' SDLT app via www.e4training.com/hydraulic_courses/maintain1.php, phone app or CD/download

Date, score & time:

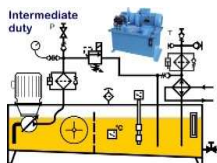
Additional video and instructional resources



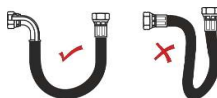
Visit www.e4training.com/hyd_maint/safety1.php and www.e4training.com/hyd_maint/fluid_risk1.php for additional explanation and videos.

Dates & durations (Optional):

Coursework



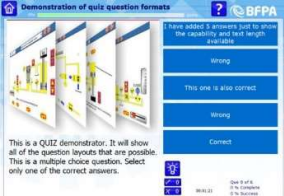
Learn how to identify the expected service life of different hydraulic equipment and review three different power unit designs to understand the facilities they use to ensure a longer life and more reliable operation.



Review a wide range of hydraulic components and identify some of the main issues affecting their reliability and learn how to control them.

Sample risk assessment

Submit a maintenance plan for the scissor lift, or alternative equipment, showing which components you will monitor, including how and why you will maintain them.



Demonstration of quiz question formats

From which direction does the wind blow?
The capability and test length available

Wrong

This one is also correct

Wrong

Correct

This is a QUIZ demonstrator. It will show all of the question layouts that are possible. This is a multiple choice question. Select only one of the correct answers.

Complete the 'TBC' Quiz either online at www.e4training.com/hydraulic_test2.php, phone app, CD or download.

Quiz name, date, score

Qualification pass requirements:

Students will need to complete and return all worksheets to their registered training provider. Methods of testing and qualification will vary between course providers.



For online certificates, students must post their results by clicking the email button that will appear in the app, once the training module has been completed.